

Joint Arctic Command



Poul Primdahl
Brigadier
Acting Commander Joint Arctic Command



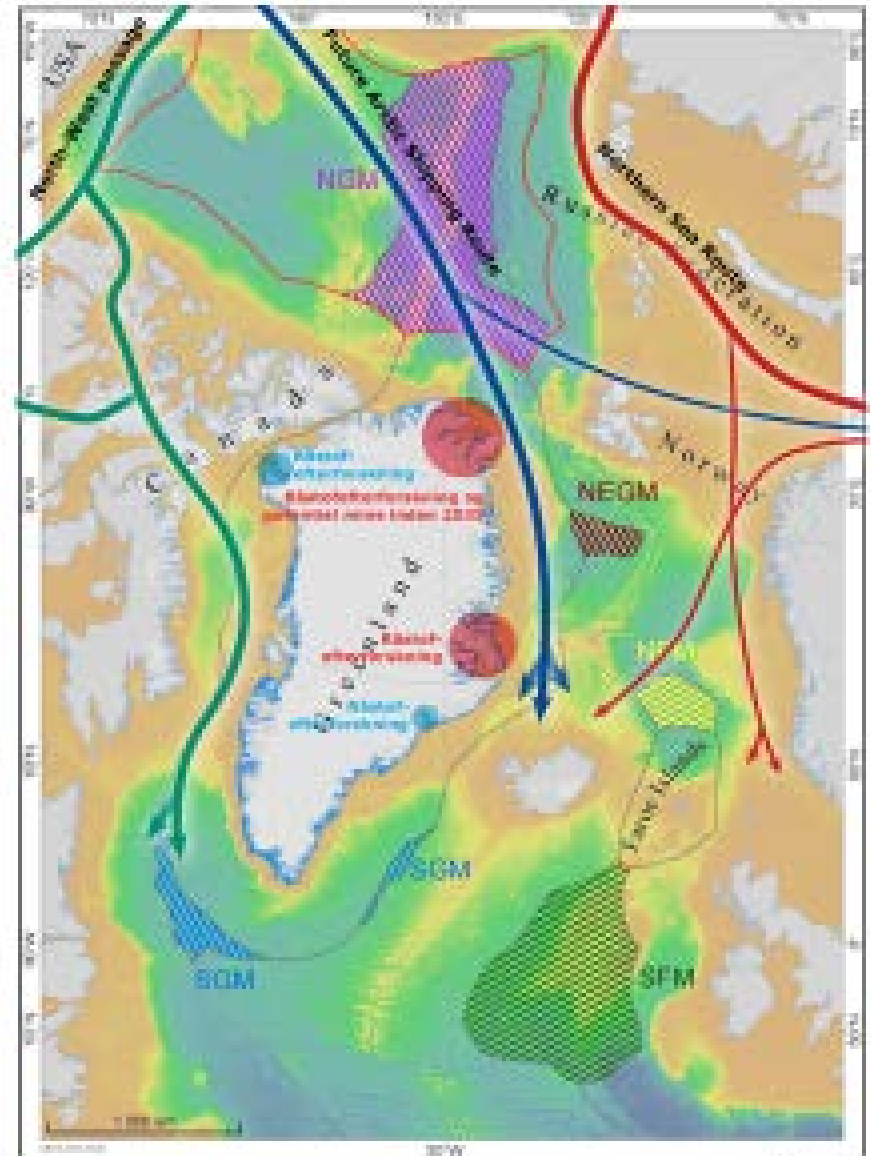
Strategic considerations

- Security- and geopolitics are changing
- Seek to maintain the Arctic Region stable and as a low-tension area
- NATO focus on the Transatlantic Sea Lines of Communication (SLOCs)
- Great Power competition and risk of spill over.



Operational considerations

- Balanced approach on:
 - Surveillance and maintaining sovereignty around Greenland and the Faroe Islands without escalating
 - Contributing to the defense of the region and GIUK gap and support to the USA
- Larger areas of operation - by example North of Greenland
- New sail routes
- Scientific research and raw material extraction
- Tourism



AREAS OF RESPONSIBILITY

Area: 2.2 million km²

Approx. six times Germany

Largest distance N/S: 2.700 km

From Copenhagen to Gibraltar

Largest distance E/W: 1.050 km

From Lissabon to Barcelona.

Coastline: 44.000 km

Longer than the distance
around Equator

**The Kingdom of Denmark is the
12th largest country in the world**

Greenland is the 13th largest

Highest point:

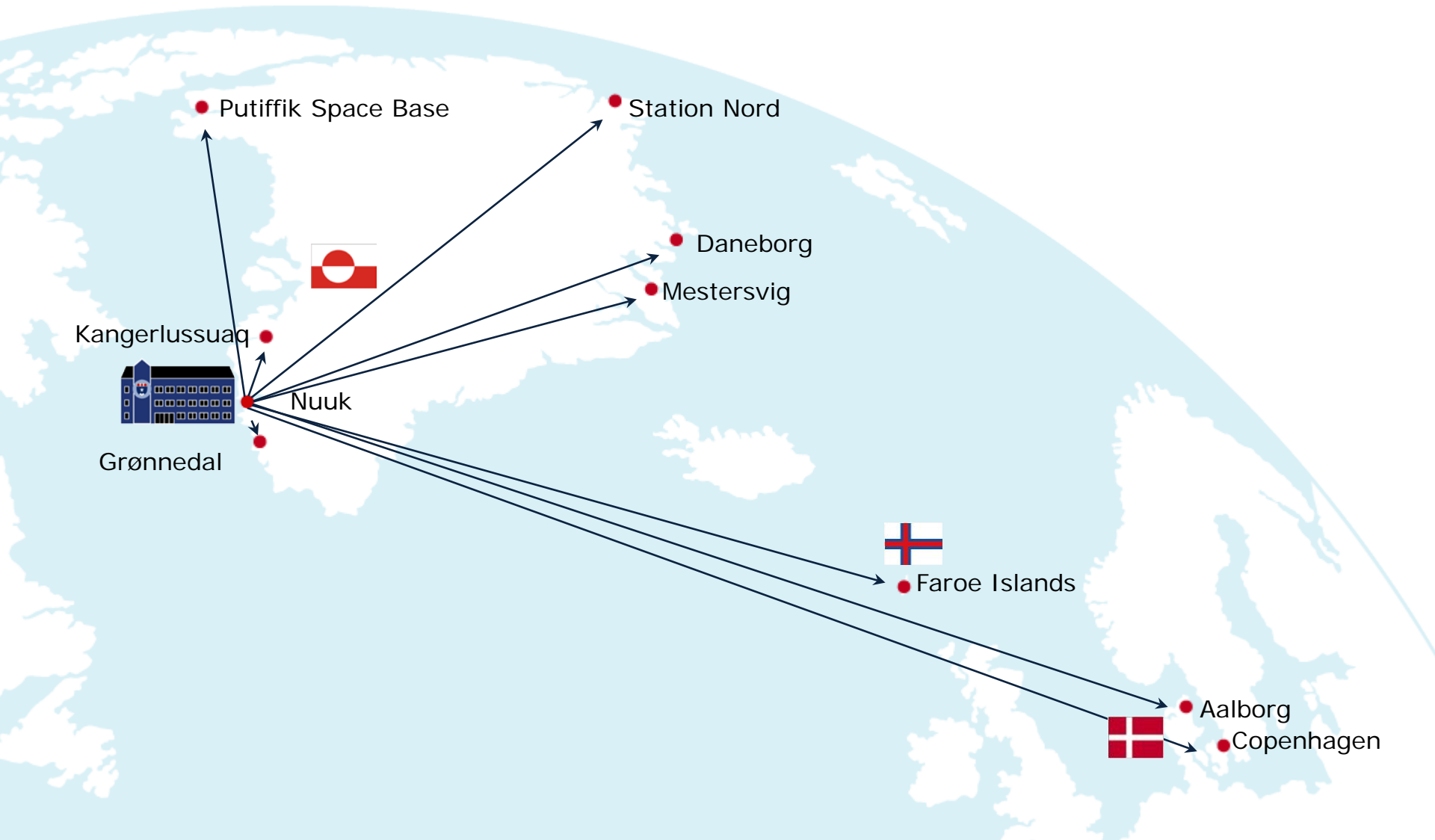
Gunnbjørns Fjeld **3.693 m**

Similar to the French Alps





JOINT ARCTIC COMMAND IS THE DANISH OPERATIONAL THEATER COMMAND FOR THE GREENLAND AND FAROE ISLANDS AREAS



JACO TASKS

Military:

- Military defence of Greenland and Faroe Islands.
- Surveillance and enforcement of territorial sovereignty.

Search and Rescue (SAR):

- Joint Rescue Coordination Centre (JRCC Greenland) (Air and Maritime).

Additional:

- Anti-pollution and oil spill recovery.
- Fishery protection and inspection.
- Disaster response.
- Police support.
- Science support.
- Hydrographical surveys of Greenland.
- Support to local communities.



Capabilities



Operating in the Arctic

In general.

- Remote.
- Extreme distances.
- Extreme weather.
- Limited or no infrastructure.
- Challenging communication.

What is required:

- Experience.
- Training.
- Robust logistics.
- Robust equipment.
- Flexibility.
- Planning and preparation.



*Adaptability and
cooperation.*

Video



Arctic Capability Package



NATO INNOVATION CHALLENGE



Monitoring the Arctic: from space to seabed

Questions?

